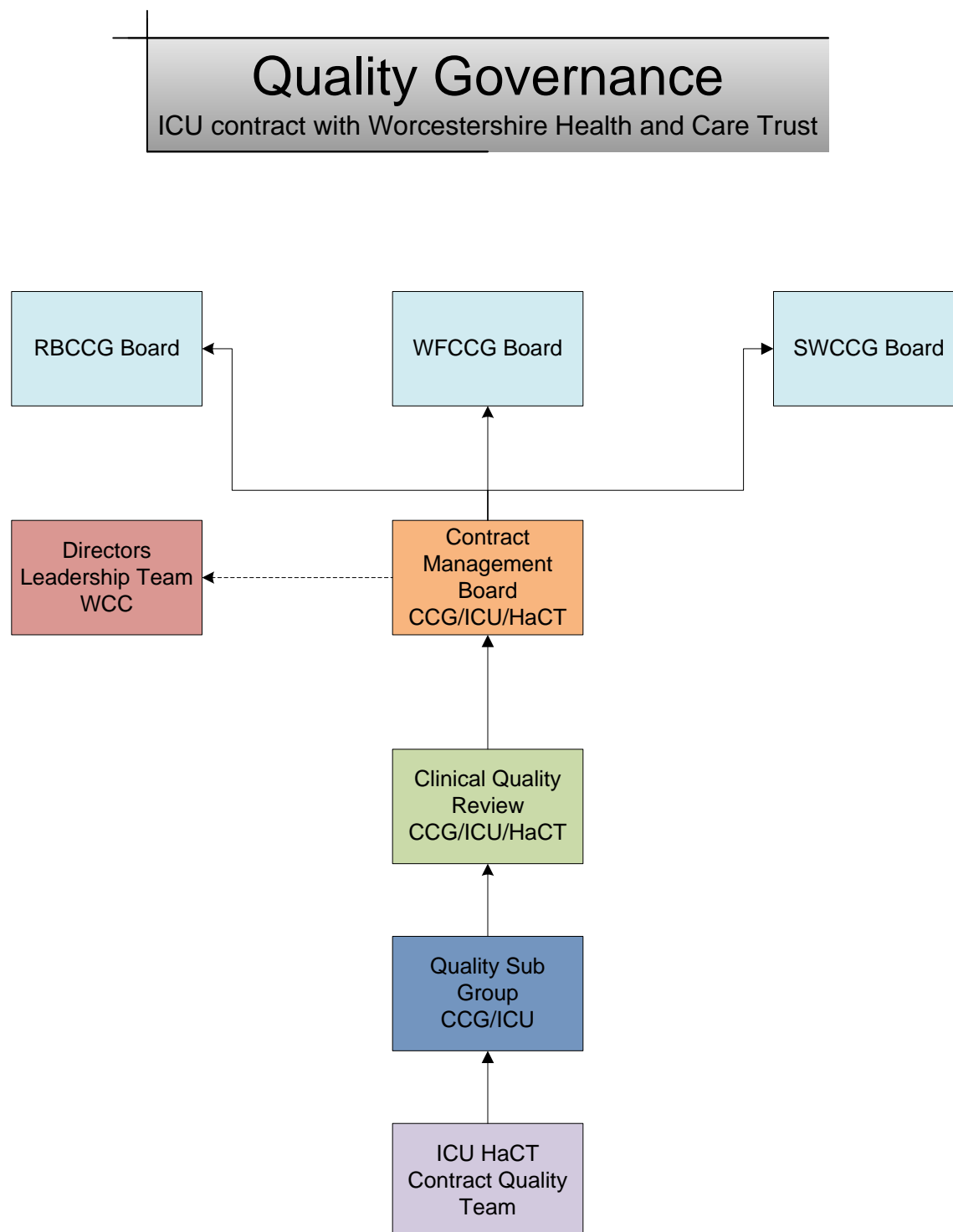


Appendix 2



ICU = Integrated Commissioning Unit

HACT = Health and Care Trust (NHS Community provider)

CCG = Clinical Commissioning Group

Note: The three CCG Board (R&B, Wyre Forest and South Worcs) representatives also meet on a monthly basis with WCC representatives which forms the Integrated Commissioning Executive Officers Group (ICEOG).